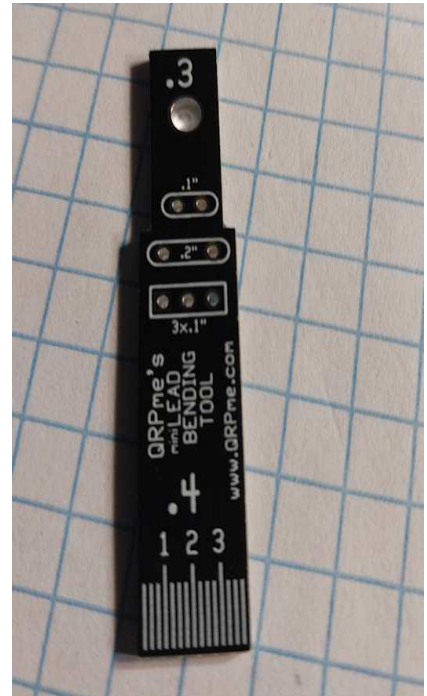


CENTO RECEIVO PARTS SORT

IDENTIFY AND SORT THE MOST
OBVIOUS THINGS FIRST

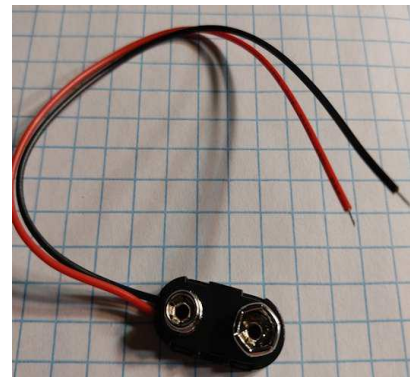
TOOL

INSERTION DEPTH FOR ALL
COMPONENTS IS .150"



9 VOLT SNAP

.1" SPACING using 2 pin SIP



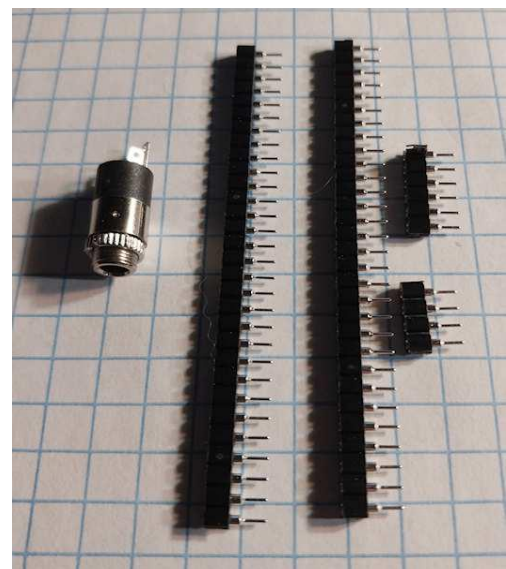
SIP SOCKETS

.1" SPACING

AND

STEREO JACK

.3" SPACING using 4 pin SIP

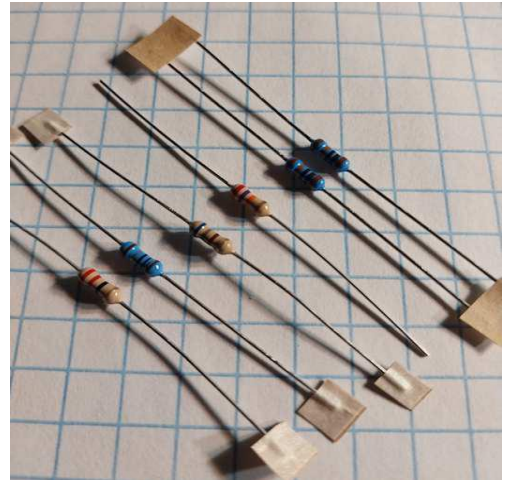


6 RESISTORS

NOTE: 3 MIGHT BE 1% RESISTORS
WHICH HAVE BLUE BODIES
AND MORE THAN 3 STRIPES

all at .1" 'hairpin' style spacing

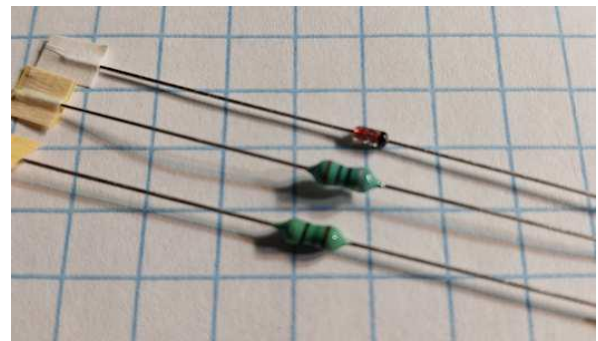
IF IN DOUBT, CHECK WITH A
DMM FOR RESISTANCE
10 OHMS AND 100K OHMS



2 CHOKES

AND A DIODE

.3" spacing



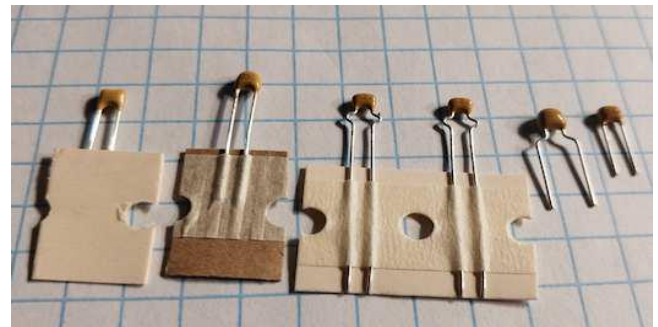
6 MISC MONOLITHIC CAPS

22, 33

2 X 100

220 & .033uf

all 6 at .1" spacing

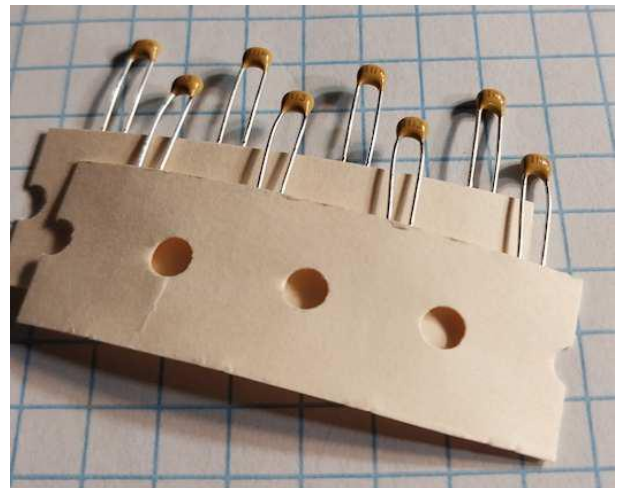


DECOUPLING CAPS

4 X .01uf

4 X .1uf

all 8 at .1" spacing



ELECTROLYTIC CAPS

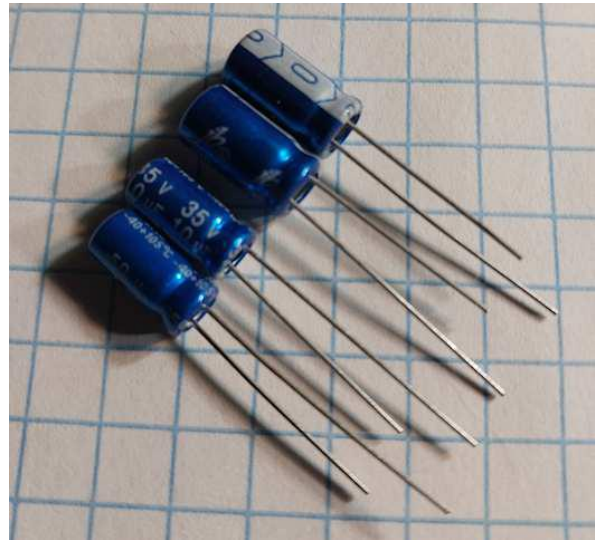
1uf

10uf

both at .1" spacing

2 X 100uf

both at .2" spacing

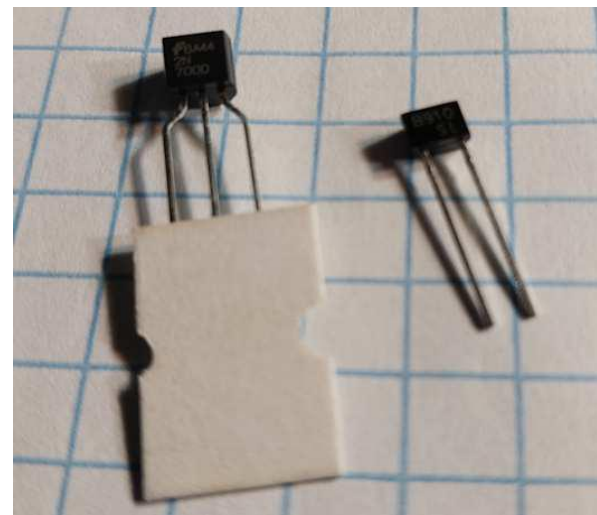


SEMIS

2N7000

BB910 VARIACAP

both at .1" spacing



ICS

SAA612

LM386

both at std IC spacing

AND

NUT & BOLT

